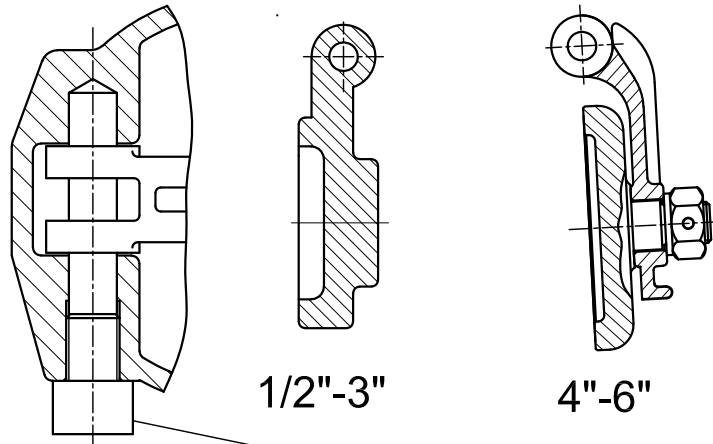
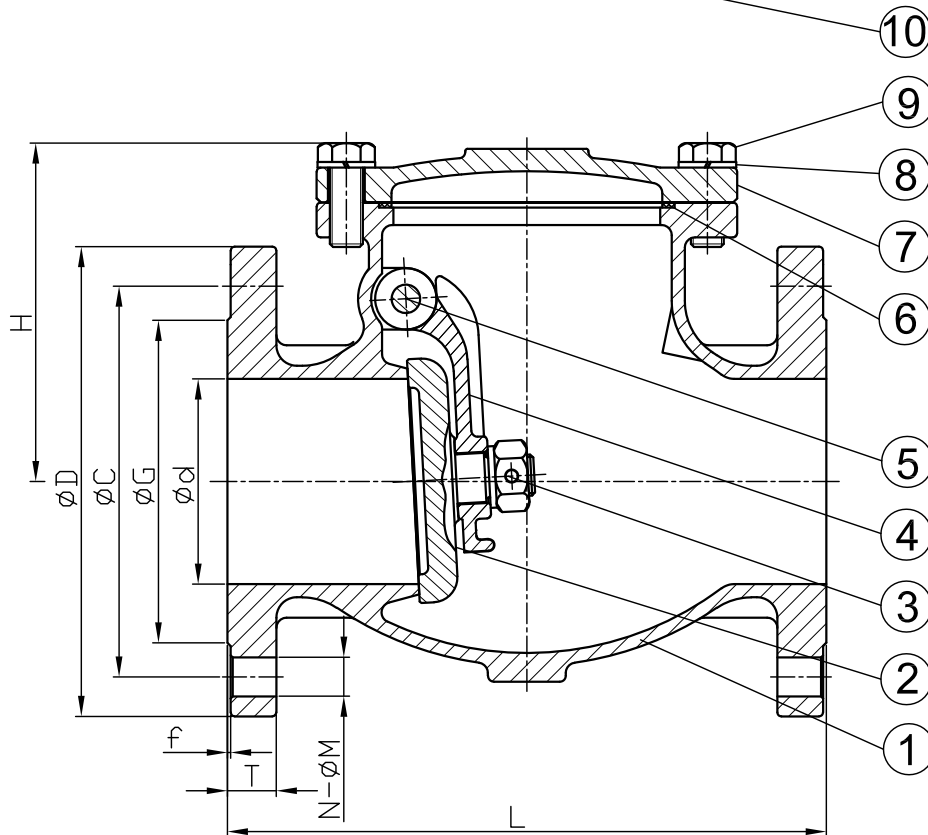


SIZE	d	L	H	D	C	G	f	T	N-ØM
1/2"	15	15	51	95	65	45	2	14	4-Ø14
3/4"	20	20	54	105	75	58	2	16	4-Ø14
1"	25	25	64	115	85	68	2	16	4-Ø14
1 1/4"	32	32	68	140	100	78	2	16	4-Ø18
1 1/2"	40	40	75	150	110	88	3	16	4-Ø18
2"	50	50	98	165	125	102	3	18	4-Ø18
2 1/2"	65	65	112	185	145	122	3	18	4-Ø18
3"	80	80	124	200	160	138	3	20	8-Ø18
4"	100	100	161	220	180	158	3	20	8-Ø18
5"	125	125	150	250	210	188	3	22	8-Ø18
6"	150	150	205	285	240	212	3	22	8-Ø22



1/2"-3"

4"-6"



FEATURES:

- FACE TO FACE DIMENSION: DIN3202-F1
- END FLANGE DIMENSIONS: DIN2633
- DESIGN: ASME B16.34
- TEST: EN 12266-1
- INVESTMENT CASTING BODY

MATERIALS LIST:

NO.	PART NAME	MATERIAL
1	BODY	1.4408
2	DISC	1.4408
3	NUT	SUS316
4	ARM HINGE	1.4408
5	HINGE PIN	SUS316
6	GASKET	PTFE
7	CAP	1.4408
8	SPRING WASHERS	SUS304
9	BOLT	SUS304
10	BOLT	SUS304

TEST PRESSURE:

SHELL(BY WATER)	345PSI
	24kg/cm ²
SEAT	250PSI
	17.5kg/cm ²
	85PSI
	6kg/cm ²

Rev.	Date	Description	Type	PN16	Rev.	A
Checked	Aaron	Scale	Fit	Date	20231206	Unit
Drawn	Charles	Describe	Swing Check Valve			